

Head Office:
Dixon Kelley Estate Agents
1 Penn Court
Station Road, West Moors
Dorset. BH22 0JJ

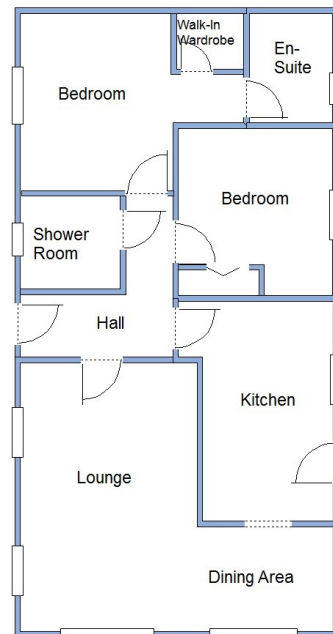
DORSET PARK HOMES

DRAFT

www.dorsetparkhomes.com

Telephone: 01202 877511

10 Jasmine Court, Organford Manor Country Park, Poole. BH16 6FJ



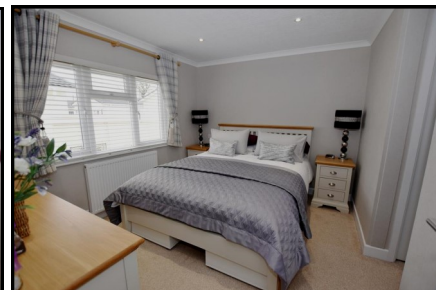
This drawing has been prepared for diagrammatic purpose only. Not to scale.

2-Bedroom Park Home - approx 38' x 20'

Accommodation & approximate room dimensions:

- Wessex 'Dorset' 2018
- Entrance Hall: Hatch to useful loft space.
- Lounge/Dining Room: approx 18'8" x 16'2" max overall. Feature fireplace. Vaulted ceiling & LED spot lights
- Kitchen: approx 13'3" x 7'9". Range of floor and wall cupboards. High level oven and hob with extractor fan over (untested). Integrated fridge/freezer, washing machine & dishwasher (untested).
- Bedroom 1: approx 10'7" x 9'1". Walk-in wardrobe.
- Luxury En-Suite Shower Room
- Bedroom 2: approx 10'1" x 9'3". Double wardrobe.
- New Shower Room: Large corner shower. Vanity unit with basin & WC. Heated towel rail.
- Gas Central Heating (system untested)
- PVCu Double-Glazing & LED Spot Lights
- Patio & Metal Shed.
- Parking on Plot
- Age Restriction 45+ Pets Considered
- Close to the towns of Poole & Wareham

Immaculate Condition



**Pitch Fee: approx £65.66 per week including Water & sewerage
Subject to Annual Review
Council Tax Band: 'A' Tenure: 1983 Mobile Homes Act Agreement**

Price: £199,950

VIEWING STRICTLY BY APPOINTMENT WITH THE VENDOR'S AGENT Dorset Park Homes 01202 877511

IMPORTANT NOTE: These particulars are believed to be correct but their accuracy is not guaranteed. They do not form part of any contract. Nothing in these particulars shall be deemed to be a statement that the property is in good structural condition or otherwise, nor that any of the services, appliances, equipment or facilities are in good working order or have been tested. Purchasers should satisfy themselves on such matters prior to purchase Ref.W04219

The recommended specialist in Park Home sales
Proprietor: Simon Dixon

